



motorola

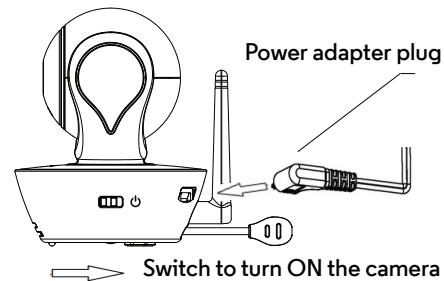
# QUICK START GUIDE

For a full explanation of all features and instructions, please refer to the User's Guide.

## 1. Setting up your Wi-Fi<sup>®</sup> Home Video Camera

MODEL:  
FOCUS85,  
FOCUS85-B,  
FOCUS85-S,  
FOCUS85-W

### A. Connect to Power Supply.



1. Insert the Power Adapter plug into the micro USB socket at the back of the Camera Unit.
2. Connect the other end of the Power Adapter into a suitable mains power socket.
3. Switch the ON/OFF button to the ON position. The coloured LED will now start flashing slowly.

### B. Install Hubble for Motorola Monitors Application.



Download the Hubble for Motorola Monitors Application from the App Store for iOS<sup>®</sup> devices or from the Google Play<sup>™</sup> Store for Android<sup>™</sup> devices.

### WARNING:


STRANGULATION HAZARD – In case this unit is being used to monitor infants or children, keep the unit and adapter cord more than 1 metre from the cot and out their reach.

Never place camera or cords within a cot or near a bed. Secure the cord away from children's reach. Never use extension cords with AC Adapters. Only use the AC Adapters provided.

As with any electrical device, supervision of your pet's usage should be exercised until your pet is acclimated to the product. If your pet is prone to chewing, we strongly recommend you keep this and all other electrical devices out of its reach.

### C. View on Compatible Smartphones, Tablets and Computers.



1. Run the Hubble for Motorola Monitors Application  hubble on smartphones or tablets.
2. Follow the in-app instructions to create your Hubble for Motorola Monitors account.
3. Log in to your account on your compatible smartphone, tablet or via [www.hubbleconnected.com/motorola/login](http://www.hubbleconnected.com/motorola/login) on your PC to access your live camera stream.

**Please take note of the following system requirements:**

*Android 4.0 or above. For iPhone /iPad iOS, it requires version 7.0 or above.*

*Windows systems, 7 or 8 (Java browser plug in needed) or Mac OS version 10.7 or above.*

*You must have a required browser version Internet Explorer 8.0 or higher, Safari 5.1 or higher, Mozilla Firefox 11.0 or higher or Google Chrome 18.0 or higher.*

## 2. Customer Support

If you are experiencing any issues with your Motorola Wi-Fi® Home Video Camera, please visit the help section on our website [www.hubbleconnected.com](http://www.hubbleconnected.com).

You can also contact our customer support teams

+44 (0) 844 557 0890 (UK only)

+44 (0) 8187 62092 (ROI)



motorola

Manufactured, distributed or sold by Binatone Electronics International LTD., official licensee for this product. MOTOROLA and the Stylized M Logo, are trademarks or registered trademarks of Motorola Trademark Holdings, LLC. and are used under license. Mac, Mac OS, iPhone, iPad and Safari are the trademarks of Apple Inc., registered in the U.S. and other countries. Android, Google Play and Chrome are trademarks of Google Inc. Wi-Fi is trademark of the Wi-Fi Alliance. Window XP and Internet Explorer are trademarks of the Microsoft group of companies. Oracle and Java are registered trademarks of Oracle and/or its affiliates. All other trademarks are the property of their respective owners.

© 2014 Motorola Mobility LLC. All rights reserved.



Printed in China  
EN\_UK Version 5.0