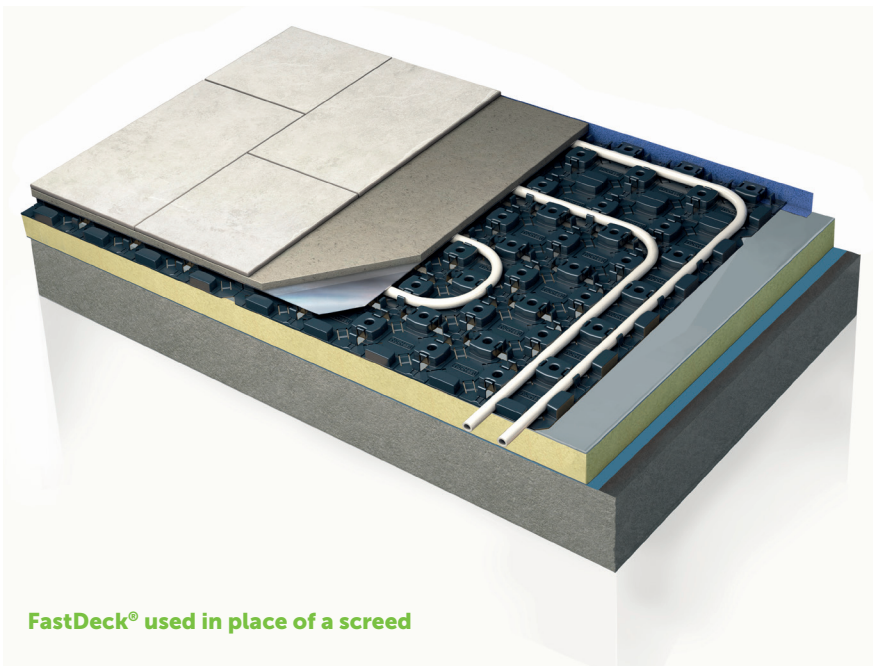


## FastDeck® – 14mm Fastflo® pipe in moulded panel with foil-faced deck

### Nu-Heat's high-tech, low-height, dry, floating underfloor heating solution



#### FASTDECK® – A WHOLE-HOUSE SOLUTION FOR EXISTING AND NEW-BUILD PROPERTIES

- ✓ Heat outputs up to 87W/m<sup>2</sup>
- ✓ Just 34mm high
- ✓ Dry floor construction –
  - no wet trades
  - floor coverings fitted immediately
- ✓ Simple and quick to install –
  - lightweight panels
  - easy to cut to size
- ✓ High structural and compressive strength
- ✓ Speeds up build process –
  - similar installation time to screed
  - no drying time
  - other trades can continue working
  - could save a course of bricks
- ✓ Suitable for any floor finish

#### DESCRIPTION

FastDeck® can be used in place of a screed finish or laid over new or existing floors. It consists of a moulded panel designed to securely hold 14mm Fastflo® floor heating tube in place – this is covered with a foil-faced deck.

The moulded panel enables pipe to be conveniently routed back to the manifold or zone distributor and is designed to guide the pipe around bends and to enable multiple runs to be neatly and securely fixed.

The foil-facing on the deck distributes heat evenly and the composition of the deck effectively conducts heat into the room.

#### ENVIRONMENTAL IMPACT

The deck consists of an inert, food-grade gypsum board with aluminium foil laminated to its underside.

The moulded FastDeck® panel is manufactured in the UK from 100% recycled polypropylene with a design life in excess of 100 years. The size of the panel has been optimised to reduce wastage on site.

#### USE IN PLACE OF A SCREED FLOOR

FastDeck® can be used where a traditional sand and cement or liquid screed floor would have been installed.

This dramatically speeds up the build schedule by removing the need for the screed to dry before floor coverings are fitted – and it is quick to install.

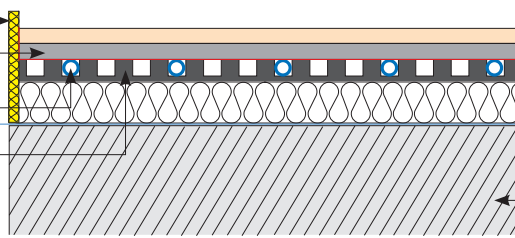
Other trades can continue to work on site during installation and, over multiple floors, one, or more, courses of bricks can be saved – again reducing build time.

When the cost of screed and its installation is factored in, FastDeck® is often a more cost-effective option – when this is added to the other benefits, we believe FastDeck® is unbeatable.

**NEW-BUILD – as a replacement for a screed floor**

**Supplied by Nu-Heat**

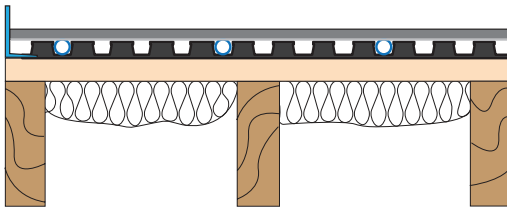
- Edge isolation strip
- Foil-faced deck
- 14mm UFH tube
- FastDeck® moulded panel



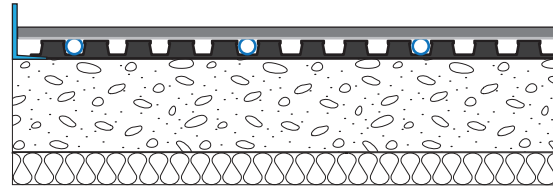
**Supplied by others**

- Floor covering
- Rigid insulation to Building Regulations
- DPM
- Concrete or beam & block slab

**RETROFIT & NEW-BUILD – over suspended timber and concrete floors**



Suspended timber deck with FastDeck®



Concrete slab with FastDeck®

**FLOOR HEATING TUBE**

Typically, a room or heating zone will use several coils of 14mm Fastflo® pipe, providing an even spread of warmth across the floor.

**INSULATION**

Insulation within the floor increases overall system efficiency.

Where insulation is installed immediately below the panel as in a screed replacement construction, it must have a compressive strength higher than 140kPa. Rigid XPS (extruded polystyrene) boards are suitable; expanded polystyrene is not suitable. The thickness of the insulation is dependent on Part L of Building Regulation and can vary.

**UNDERFLOOR HEATING EFFICIENCY**

FastDeck® is a perfect partner for modern gas, oil and LPG condensing boiler. It can be used with heat pumps in all new-build properties and where insulation levels have been increased to meet current Building Regulations.

**FLOOR STRUCTURE**

Where specified in a new-build in place of screed, FastDeck® is laid directly over rigid insulation on a slab. A sand blinding layer can be used to level the slab before fitting the insulation if required.

In retrofit and new-build FastDeck® can be installed over concrete and timber floors with ease. Individual panels are laid across the floor and covered with the foil-faced deck supplied as part of the system.

Where possible existing floors should be levelled before fitting FastDeck® but minor irregularities will not affect the installation.

**FLOOR COVERINGS**

Virtually any covering (except natural timber) can be applied over FastDeck® – using thermally conductive coverings ensures greater heat output and faster warm up times.

**WARRANTIES/INSURANCE**

**Manufacturer's warranty:** all UFH tube supplied by Nu-Heat is covered by a 50-year warranty, the first 10 years of which are insurance-backed.

**Product liability:** Nu-Heat maintains product liability insurance to £5 million.

**Professional indemnity:** As Nu-Heat's design service is integral to the operational effectiveness of the UFH system, the company holds professional indemnity insurance of £5 million to cover all aspects of our consultation and design services.

**HEAT OUTPUTS**

**FastDeck® panel with laminated deck – 150mm spacings**

Flow water temperature	Available heat flow, W/m <sup>2</sup>			
	40 °C	45 °C	50 °C	55 °C
Tile and stone	44	58	73	87
Vinyl	35	47	59	71
14mm laminated timber (22mm engineered hardwood), limit to 75W/m <sup>2</sup>	40 (32)	53 (42)	66 (53)	80 (63)
2 tog carpet/underlay	20	27	34	41

Note: Figures are based on a nominal 10 °C water temperature drop.