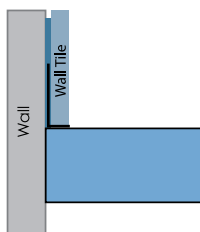
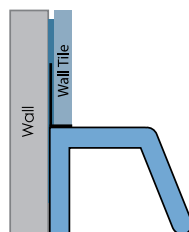


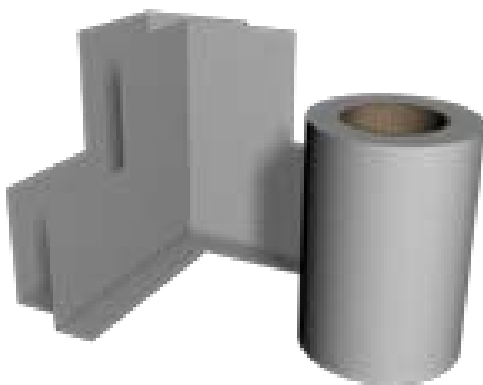
✓ **Shower Trays**



✓ **Work Tops**



✓ **Baths**



Installation Instructions

-

Self Adhesive Waterproof Corner - Internal

Self Adhesive Waterproof Tape - 80mm x 5m

Self Adhesive Waterproof Tape - 80mm x 50m

Advantages

- ✓ Flexible, waterproof tape - will move with any settlement in the building
- ✓ Comes with pre-formed internal corners for ease of installation
- ✓ Thin material - Can be used with any thickness of tile without unsightly bumps, i.e. glass mosaics
- ✓ Can be installed AFTER the bath, shower tray or work top



Step 1

Place the Waterproof Self Adhesive Internal Corner into position temporarily and mark around it with a pencil, then place to one side. Measure the lengths of Waterproof Self Adhesive Tape required using a tape measure and cut from the roll accordingly, using a safety blade or scissors.

Note: The lengths of tape should overlap any internal corners by 20mm approx when in position.

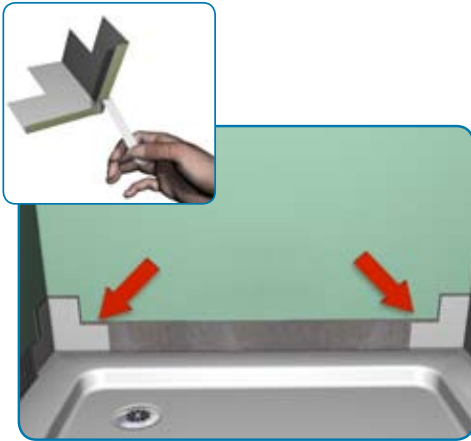
Note: Internal Corners and tape come with a standard 10mm adhesive strip which should be sufficient for most installations and tile thickness.

If you are fitting thin tiles such as glass mosaics you may want to reduce the width of the adhesive strips. This can be done easily using a safety blade or scissors so that the strip is not visible after tiling.



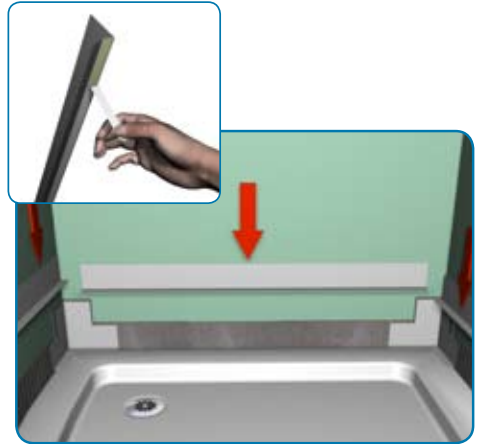
Step 2

Apply a thin coating of tile adhesive to the walls slightly bigger than the width of the Waterproof Self Adhesive Tape and the pencil marked location of the internal corners as shown.



Step 3

Ensure that the base surface (in this example, the shower tray) is clean and dust/dirt free. Remove the self adhesive strip backing tape from the internal corners (B) then stick the self adhesive edge onto the top surface of the shower tray and push into the tile adhesive.



Step 4

Remove the self adhesive strip backing tape from the lengths of Waterproof Self Adhesive Tape (A) then push into the tile adhesive layer by hand ensuring that the adhesive strip is firmly stuck down to the base surface. Repeat for all further lengths of Waterproof Self Adhesive Tape (A). Ensure that the tape overlaps the corners by approximately 20mm.



Step 5

You are now ready to tile as normal.



Step 6

Run a finishing bead of silicone along the edges where the base surface and tile meet, safe in the knowledge that any water that ever permeates this seal in the future will be protected by the additional waterproof barrier created by the waterproof taping system.

Leave to cure prior to use in accordance with manufacturer's guidelines.

Due to our commitment to continuous product development we reserve the right to alter specifications without notice. Products are guaranteed against manufacturing defects for the first purchaser only and the guarantee is non-transferable. Our liability under any guarantee expressed or implied is strictly limited to replacement of defective goods or a refund at our discretion and no consequential losses will be entertained. Proof of purchase will be required.