

Installation Instructions

Single Lever Wall Mounted Basin Mixer

Installation Instructions

Important - Please Read

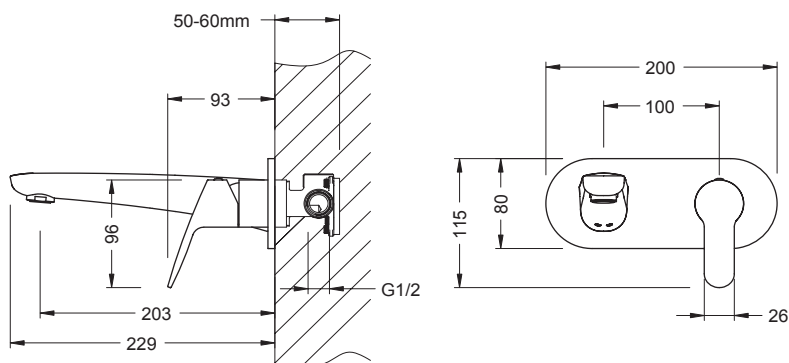
Please read these instructions carefully before starting installation and keep for future reference. Remove all packaging and check the product for missing parts or damage before starting installation. Any alterations made to this product and fittings may infringe water regulations and will invalidate the guarantee. The installation must comply with all Local/ National Water Supply Authority Regulations/Byelaws and Building and Plumbing (UK:BS6700) Regulations. We strongly recommend that you use a qualified and registered plumber.

General Installation

These fittings are mixing devices and therefore water supplies must be reasonably balanced. Where connections are made to the mains cold water supply, WRC approved single check valves must be fitted to both hot and cold inlets. This is a stated requirement of Water Supply (Water Fittings) Regulations 1999 Schedule 2, Section 6 G15.13.2 Before making any inlet pipe connections, all supply pipes **MUST** be thoroughly flushed to remove debris. Failure to do so could result in damage or low flow from the mixer unit. Water Supply (Water Fittings) Regulations 1999 Schedule 2 Section 4 G13.1 The fitting of isolating valves to the inlet feeds is advised for ease of maintenance. Please take great care when installing this mixer not to damage its surface.

Care Of The Mixer

Our products are finished to the highest standard and due care needs to be taken to ensure their looks are retained. We recommend cleaning all products with a soft damp cloth **ONLY** and advise strongly against the use of **ALL** cleaning products i.e. powders and liquids. If the above instructions are not followed this will invalidate your guarantee in the event of a problem occurring.



Installation

Before installing your new mixer, flush through the pipework to ensure removal of debris and turn off the water supply. The valve must be set into the wall.

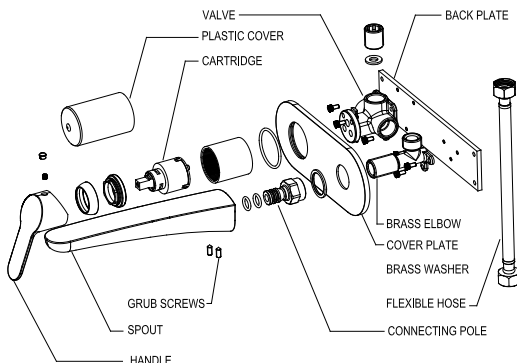
The concealed part is supplied in separate parts to enable the handle to be easily located on either the left or right by means of flipping the back plate (see fig. 1). After choosing the orientation fix the brass elbow and valve to the back plate using the allen screw fixings supplied, then connect the valve to the brass elbow using the flexible hose supplied.

Mark a horizontal line on the wall at the required height then fix the valve in place ensuring that it is level. Connect the hot and cold water feeds to the valve taking care to connect the HWS to the left (as indicated by a red mark on the valve itself).

NOTE: The plate should be fitted at a depth so that the screw thread on the brass elbow will protrude no more than 5mm from finish tile.

After tiling, remove the plastic cover protecting the valve then fit the chrome face plate and handle.

Using the allen key provided loosen the grub screws on the underside of the spout to release the brass fitting. Fit the brass washer to the rear of the connecting pole then screw the brass connecting pole on to the brass elbow. Slide the spout over the brass connecting pole then secure in place by re-tightening the grub screws on the underside of the spout.



BACK PLATE ORIENTATION FOR HANDLE ON RIGHT



BACK PLATE ORIENTATION FOR HANDLE ON LEFT

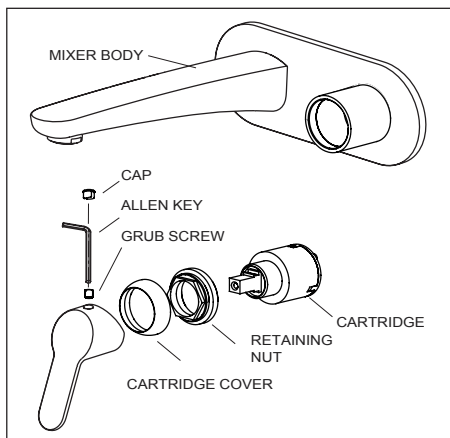
Fig. 1 - Back Plate Orientation

Cartridge Cleaning / Replacement

In the unlikely event that the cartridge requires replacement or for general cleaning, please first shut off the water supply to your mixer. Loosen the grub screw in the handle but do not remove it. Take off the handle then unscrew the cartridge cover. Using a correct size spanner unscrew the retaining nut. Pull the cartridge and wash it with clean running water. Dry and lightly grease the seals (only use silicone grease). Refit the cartridge and replace the retaining nut, cartridge cover and handle in turn.

General Cleaning

Periodically unscrew the aerator and rinse it with clean running water to remove any loose debris. Replace and re-tighten.



Due to our commitment to continuous product development we reserve the right to alter specifications without notice. Products are guaranteed against manufacturing defects for the first purchaser only and the guarantee is non-transferable. Our liability under any guarantee expressed or implied is strictly limited to replacement of defective goods or a refund at our discretion and no consequential losses will be entertained. Proof of purchase will be required.